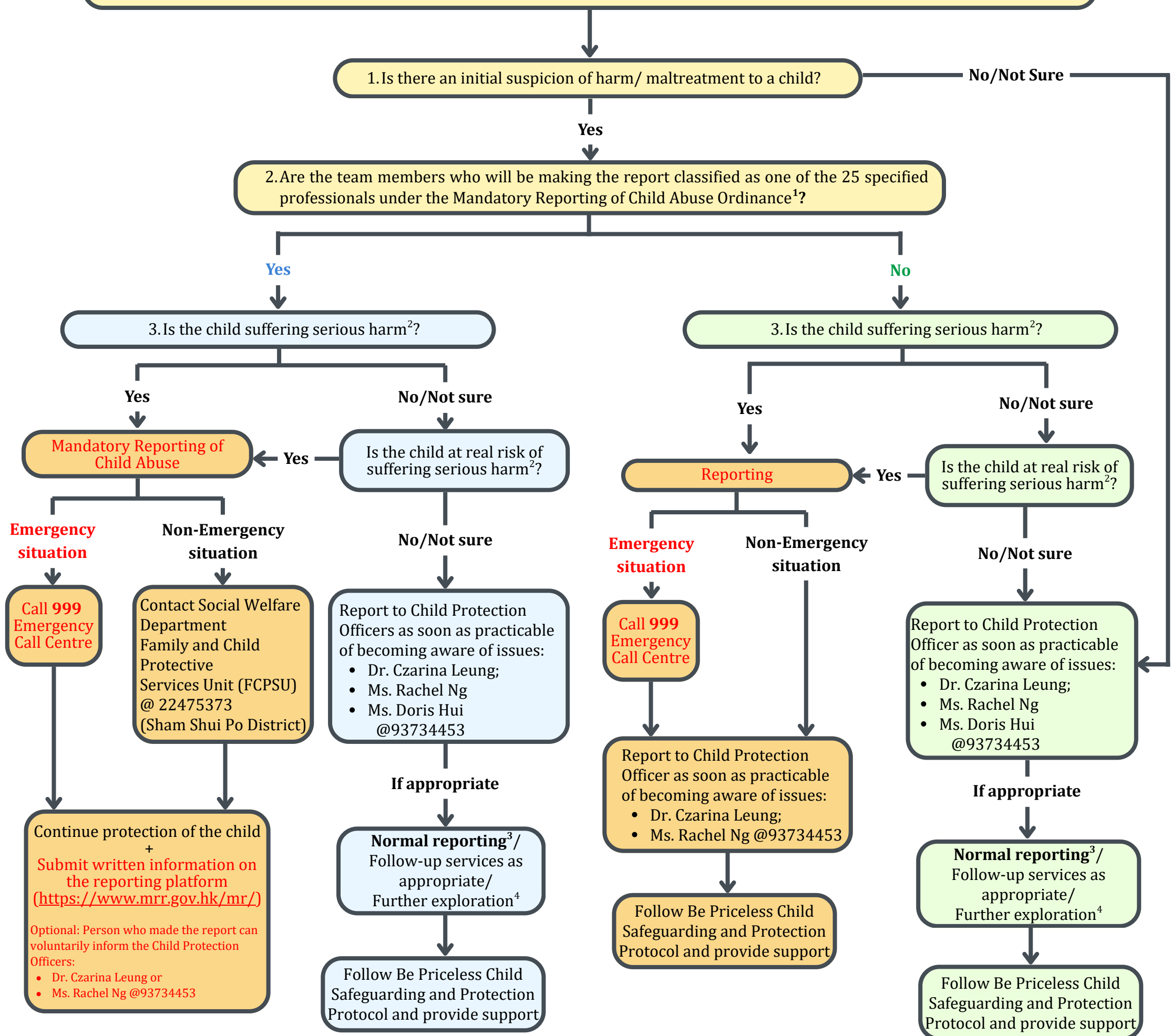




# Child Safeguarding Reporting Procedure

- Team members identify any physical/ behavioural/ emotional/ environmental indicator(s) showing that child may have suffered from harm/ maltreatment
- Child discloses the incident to team members
- Other persons disclose the incident to team members



**\*It is prohibited for anyone to disclosing identity of specified professionals who made mandatory reporting.**

<sup>1</sup>For the 25 categories of specified professionals, please refer to "Guide for Mandatory Reporters" (Jan 2026 Updated), pages 189-191.

<sup>2</sup>For the definition of serious harm, please refer to "Guide for Mandatory Reporters"(Jan 2026 Updated), page 192.

<sup>3</sup>Report to the child's unit's responsible social worker; if there is no responsible social worker, report to the Social Welfare Department Family and Child Protective Services Unit (FCPSU) @ 22475373 (Sham Shui Po District).

<sup>4</sup>After further exploration, team members may, depending on the circumstances, reconsider whether to make a report or take other actions in accordance with procedures.